



naturalflow

eco-wastewater & sewage systems
by Waterflow NZ Ltd

NaturalFlow Wastewater Treatment Systems

DISK FILTER CLEANING MANUAL



NATURALFLOW TREATMENT SYSTEMS

Disk Filter Cleaning Manual

New Zealand's Leaders in Eco-Sustainable, Odourless Wastewater and Sewage Systems

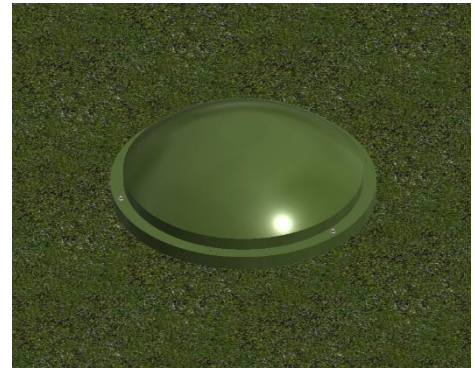
NaturalFlow Wastewater Treatment Systems are fitted with an alarm system that alerts the homeowner to any service requirements or potential problems.

As a blocked irrigation filter is the most common cause of an alarm activation, the first step if the alarm is activated is to clean the system's irrigation filter by simply following the steps below. If the alarm is still activated 30 minutes after the irrigation filter has been cleaned out, please call Waterflow on 0800 628 356 to speak to a service technician.

To keep the irrigation filter performing efficiently, we recommend that the homeowner clean the filter every 6-8 weeks.

Cleaning Your Disk Filter

1. Go to your NaturalFlow system and locate the pump chamber. This Chamber will have a power lead going to it from the nearby power outlet.



2. Turn off the power to the pump. This is connected by an outdoor power socket located near your NaturalFlow System.



3. Remove the lid using a 3/8 hex bit, to locate the disk filter inside.



See our website: www.naturalflow.co.nz

NATURALFLOW TREATMENT SYSTEMS

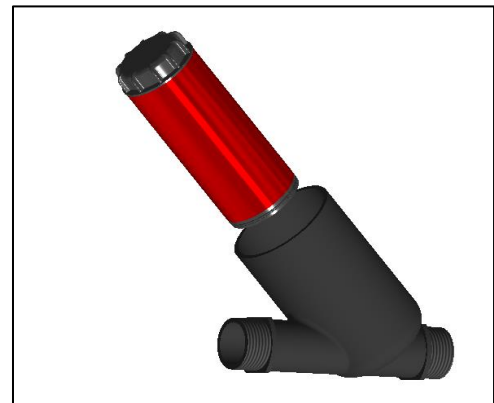
Disk Filter Cleaning Manual

New Zealand's Leaders in Eco-Sustainable, Odourless Wastewater and Sewage Systems

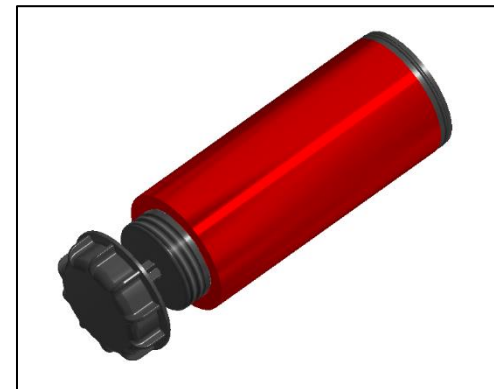
4. Slowly remove irrigation cap (unscrew anti- clockwise). It is important to unscrew slowly to allow any built up pressure to be relieved. Watch out for the O-ring inside the cap, be careful not to drop this in the tank.



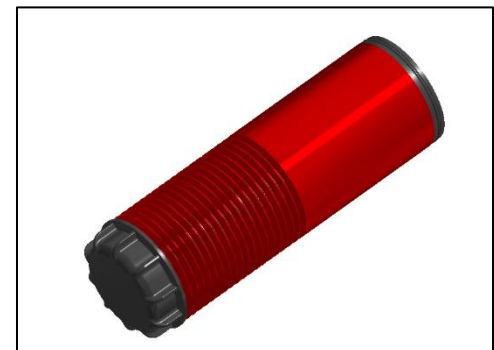
5. Remove internal filter disc.



6. Loosen disc by unscrewing top off in an anti-clockwise direction.



7. Wash out disc with garden hose or similar. Be sure to separate discs and clean in between.



NATURALFLOW TREATMENT SYSTEMS

Disk Filter Cleaning Manual

New Zealand's Leaders in Eco-Sustainable, Odourless Wastewater and Sewage Systems

8. Tighten the disk back up and return it to the filter housing.



9. Screw the end of the housing back on tightly by hand.



10. Wash hands with anti-bacterial soap.



11. Turn the power back on to the pump.





naturalflow

eco-wastewater & sewage systems
by Waterflow NZ Ltd

"We do it simpler"



Call us today to discuss your needs

0800 628 356

Or for more information www.naturalflow.co.nz



Head Office
Waterflow NZ Ltd
PO Box 24, 1160 State Highway 12,
Maungaturoto 0547, New Zealand
P. 09 431 0042
E. sales@waterflow.co.nz

South Island Office
NaturalFlow South Ltd,
82 Johns Road,
Belfast, Christchurch 8051
P. 03 323 8541
E. sales@naturalflowsouth.co.nz

www.naturalflow.co.nz